

Advance Model Sticker Machines & Stands



Assembly & Operation

***This is the assembly and operation
guide for the following models:***

ADVF2-R ADVF2-B

ADVF3-R ADVF3-B

ADVF4-R ADVF4-B

ADVR2-R ADVR2-B

ADVR3-R ADVR3-B

ADVR4-R ADVR4-B

17" Pedestal Stand

22" Pedestal Stand

X Stand

INDEX

Parts List. 2

Tools. 3

Stand, Assembly. 4

Machine, Assembly 6

Loading. 8

Hood, Installing. 10

Stackables, Assembly. 12

PARTS LIST

Cabinets:

CAB2BR	2 Column Black Round
CAB2BF	2 Column Black Flat
CAB2RR	2 Column Red Round
CAB2RF	2 Column Red Flat
CAB3BR	3 Column Black Round
CAB3BF	3 Column Black Flat
CAB3RR	3 Column Red Round
CAB3RF	3 Column Red Flat
CAB4BR	4 Column Black Round
CAB4BF	4 Column Black Flat
CAB4RR	4 Column Red Round
CAB4RF	4 Column Red Flat

Fully Assembled Sticker Fronts:

FRONT2-ASS	2 Column Assembled Front
FRONT3-ASS	3 Column Assembled Front

Miscellaneous:

300173	2 Column Plexi
300281	3 Column Plexi
0405BET	Lock/Key/Cam
10FOXPEZ	10-32X12 PP EX SEMS Screw
6CNKEZ	6-32 Keps Nut Plated
ADVBRACKET	Pusher Bracket
COINBOX2	2 Column Coin Box
COINBOX3	3 Column Coin Box
COLUMN	Sticker Column Assembled
FRONT2	2 Column Front-White
FRONT3	3 Column Front-White
SMV-5ASS	Slide Mechanism
WEIGHT	Weight

TOOLS

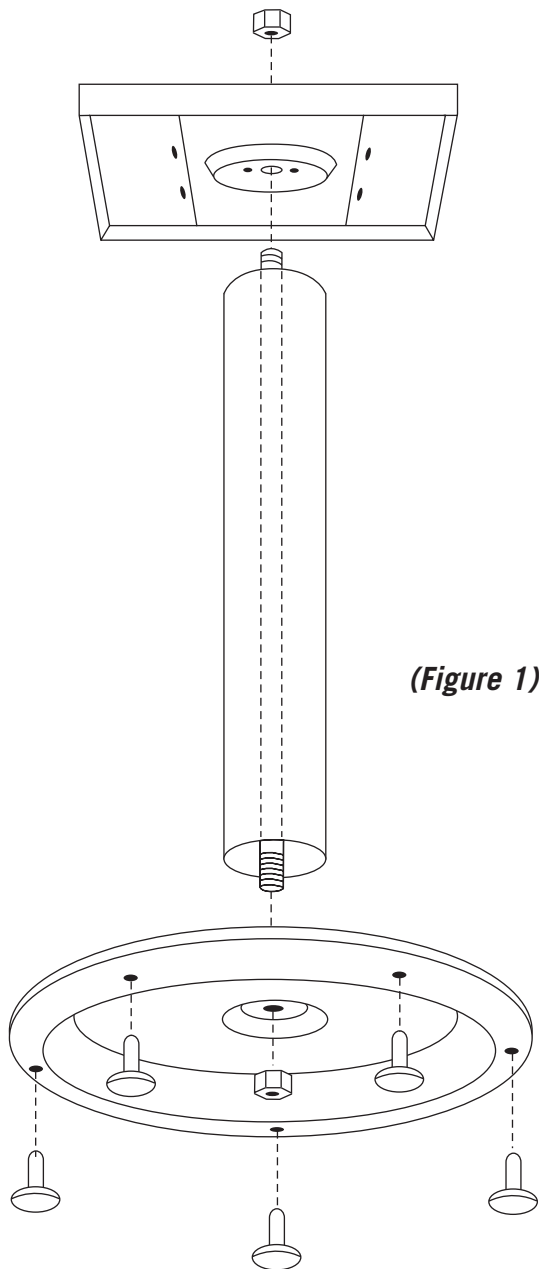
7/16 Ratchet (optional)

Pliers

Adjustable Wrench

SETTING UP YOUR STAND

- 1** Locate and identify the stand parts from the boxes.
- 2** If your center rod does not have a square nut on one end, take one of the center rod nuts and a lock washer and screw it on one end so that the nut is even with the bottom of the rod.
- 3** Place the base on a prop (such as a telephone book) to eliminate any up or down play of the rod. Place the column over the rod so that the bottom of the column sets into the base. (Fig. 1)
- 4** Slide the mounting plate onto the center rod. Place the flat washer, lock washer, and nut onto the center rod. (Fig.1)
- 5** Make sure that the mounting plate is centered over the rod and the column. Using a wrench, tighten the center rod nut. (Fig. 1)
- 6** You are now ready to install your machine.

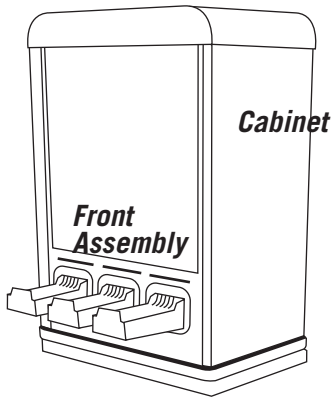


(Figure 1)

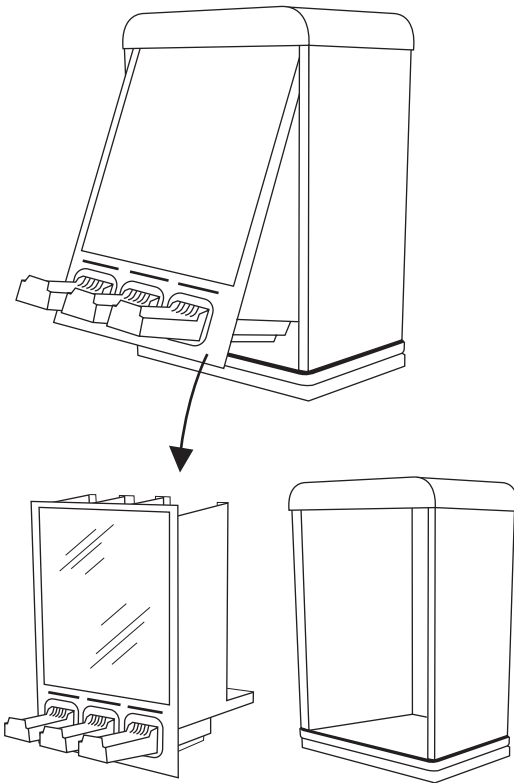
SETTING UP YOUR MACHINE

- 1** Remove the machine from the box and place it on a steady surface. Note the parts of the assembly. (Fig. 1)
- 2** Insert the key in the lock and turn to open. By grabbing the coin mechanisms in each hand, lift the entire front assembly until it stops. In a tilting motion, pull the bottom towards you. Lower the front assembly until the top clears the cabinet. Set the front assembly aside. If you have four column machine repeat this step for the other side. (Fig. 2)
- 3** Set the cabinet on the stand you intend to use. If you are using a two column model and not mounting your machine on a rack stand, you may need to drill your own holes. Line the holes in the bottom of the cabinet with the holes on the stand. Be careful not to over-tighten the bolts. (Fig. 3)
- 4** Place the cash box in the inside bottom of the cabinet, and load the front assembly with your products (refer to page 6 for loading instructions).
- 5** Return the front assembly into the cabinet by tilting the top in, lifting up and swinging the bottom in (reverse motion of step 2). Lock your machine and remove the key. You are now ready to vend.

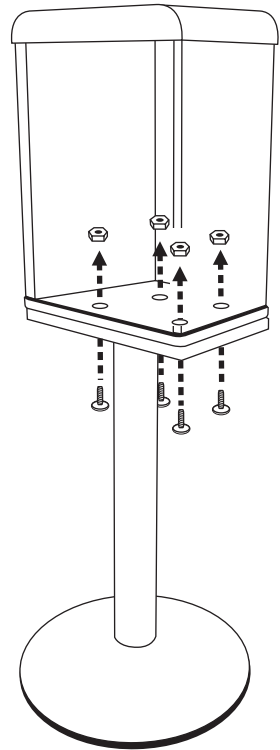
(Figure 1)



(Figure 2)



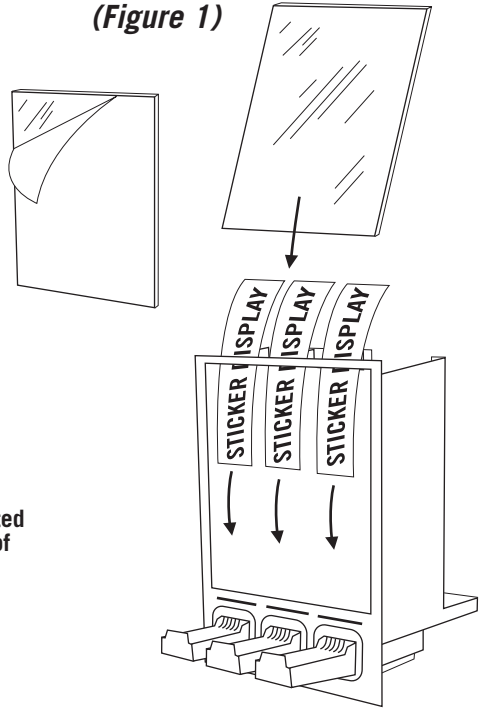
(Figure 3)



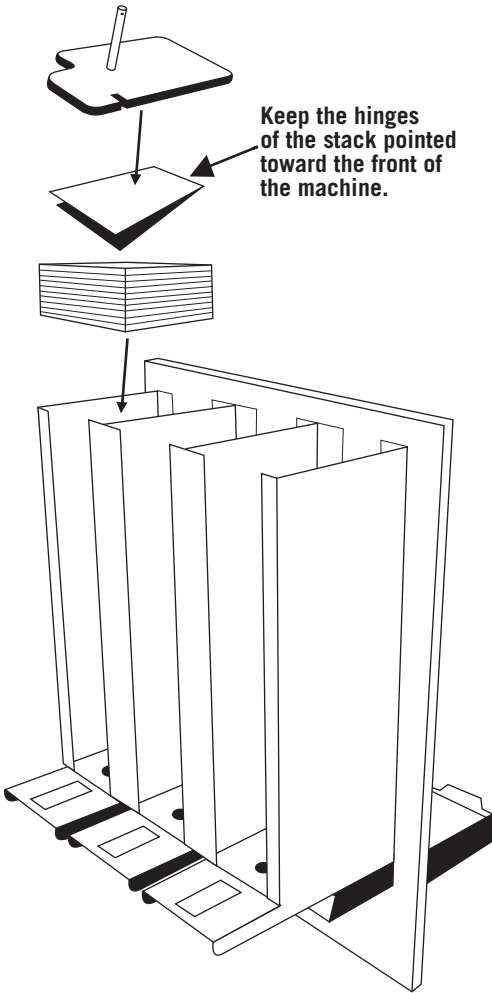
LOADING YOUR MACHINE

- 1** Slide the Plexiglass panel from the front assembly. Remove the protective covering from the front and rear of the Plexiglass. (Fig. 1)
- 2** Place your sticker displays on the front assembly and slide the Plexiglass back into position. (Fig. 1)
- 3** Be sure to remove any rubber bands around a pack of stickers before placing them in your machine. Stickers are vended hinged edge first (like an arrow). Place the weight on top of the stickers. The bolt head on the weight should be facing down. (Fig. 2)

(Figure 1)



(Figure 2)

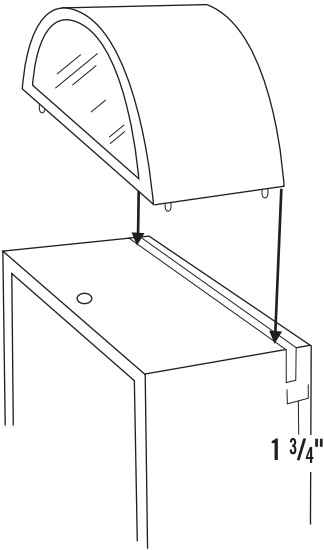
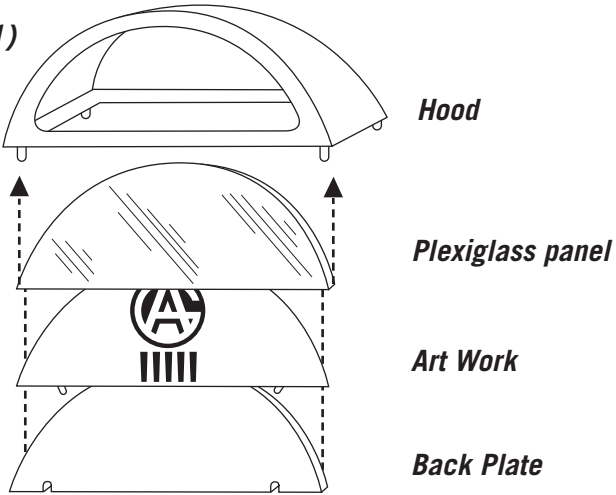


INSTALLING YOUR HOOD

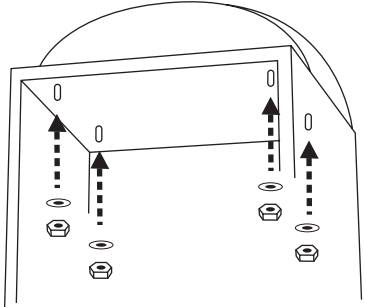
If your cabinet is not pre-drilled, please follow all of these instructions. If your cabinet is pre-drilled, please go to step 4.

- 1** Lay the hood on a flat surface, display side down. Insert the Plexiglass panel, artwork, and back plate. Secure the back plate with the lock washers and nuts provided. (Fig. 1)
- 2** If your hood has been pre-drilled at our factory please skip this step. Using masking tape, make a guide line across the top rear of the machine. The front edge of the tape should be 1 3/4" from the cabinet back. Set the hood on top of the cabinet so the back of the hood lines up with the front edge of the tape. (Fig. 2)
- 3** Using a marker, transfer the location of the mounting screws to the cabinet. Drill four (4) 5/16" holes.
- 4** Make sure you remove the front assembly so you will be able to tighten the screws from inside the cabinet. Sit the hood on top of the cabinet so that the mounting screws slide into each hole. Secure with the lock washers and nuts. (Fig. 3)
- 5** Return the front assembly to the machine. Lock the machine. You are now ready to vend.

(Figure 1)



(Figure 2)



(Figure 3)

SETTING UP YOUR STACKABLES

- 1** Set up your stand as instructed in the manual. Please note that because you are stacking two machines on top of each other, your stand center rod and column have been shortened to accommodate the machines. Do not return the front assemblies into their cabinets until after the top machine is installed.
- 2** Install the flat top cabinet first as instructed in this manual.
- 3** Place the rounded top cabinet on top of the flat cabinet. Be careful to align the holes on each cabinet so that a 1/4" bolt will pass through each machine. Attach a washer and nut to the bolt. (Fig.1)
- 4** Return front assemblies into their cabinets. You are now ready to vend. (Fig.1)

■ **NOTE:**

In order to service the lower half of your stackable, access to your lock is gained through the top machine. Service the top first, set aside the front assembly, service the bottom, and then return the front assemblies to their cabinets and relock the machines.

(Figure 1)

